

安全檢查 Regular Safety Inspection

牽機電工程署呼籲：氣體裝置須每18個月作定期安全檢查。

為確保家居安全，蜆殼石油氣會委派合資格註冊氣體工程承辦商，為客戶提供每18個月一次的免費定期安全檢查服務，確保客戶的石油氣爐具及相關裝置運作正常。如欲安排檢查或有任何查詢，請即致電客戶服務熱線 2435 8388 預約。

EMSD Warning: Householders should arrange regular safety inspection of gas installation in every 18 months.

To ensure our customers' home safety, Shell Gas provides free safety inspections service to all customers every 18 months and will be executed by registered gas contractor. To make an appointment or for any inquiry, please contact our Customer Service Hotline **2435 8388**.

蜆殼石油氣常用電話 Shell Gas Useful Hotlines

客戶服務熱線
Customer Service Hotline :

2435 8388

24小時報錶熱線

24-hr Meter Reading Reporting Hotline:

2435 7787

24小時緊急熱線

24-hr Emergency Hotline:

2322 2000



網址 Website :
www.dsg-energy.com

處理石油氣洩漏 Emergency Procedures of Gas Leaks

1 熄滅所有火種 To put out all naked flames

▶ 熄滅一切火種。
Extinguish all naked flames.



▶ 切勿開關任何電掣。
Do not touch any electrical switch.



2 將石油氣散發出屋外 To disperse the gas

▶ 關掉所有氣體爐具及石油氣總掣。
Switch off all gas appliances and the main valve.



▶ 打開所有窗戶讓石油氣散發出外。
Fully open windows and doors.



3 如情況不受控制 If the gas leakage is serious

EXIT 出口

1 立即遠離現場。
Leave the scene.



2 到事發場外致電蜆殼石油氣24小時緊急熱線 **2322 2000** 或 **999** 報警。
Immediately call our 24-hour Emergency Hotline **2322 2000** or **999** outside the scene.



3 請清楚說明您的姓名、地址及現場情況。
State your name, address and current situation clearly.



4 如發現或懷疑鄰居洩漏石油氣，應敲門通知鄰居。切勿按門鈴或任何電掣！
If LPG is detected or suspected to be leaking from an adjacent flat, please inform your neighbor but **DO NOT PRESS** the doorbell or any electrical switch!

中央石油氣維修保養服務 Piped LPG Maintenance Service

安全一向是蜆殼石油氣最重視的事宜，我們致力提供全方位的專業檢查和保養服務，以確保客戶之供氣設備及爐具運作正常。客戶可選擇月費計劃或單次收費，服務包括：

Safety is of paramount importance in Shell Gas. We are dedicated to providing a full range of professional checks and maintenance services to ensure your home safety. There are monthly maintenance services plan and one-time services charge for selection, the maintenance service covers:

1 免費檢查 / 維修石油氣爐具 (不包括零件費用)

Free check/repair service of LPG appliances (spare parts & components charges are not included)



2 免費提供內牆石油氣喉管檢查及壓力測試 (不包括泥水 / 建築 / 粉飾工程及更換喉管)

Free checking and pressure testing of internal LPG pipework (Construction work, renovation, decoration & pipe replacement are not included)



3 免費提供專業意見改善安全效益

Free safety advice by registered gas installers to ensure home safety



中央管道蜆殼石油氣 安全資訊小冊子 Shell Gas Safety Leaflet (Piped)



蜆 燃 安 心
燃 點 家 的 溫 度



Shell GAS
Licensee

石油氣的特性 The Properties of Liquefied Petroleum Gas (LPG)

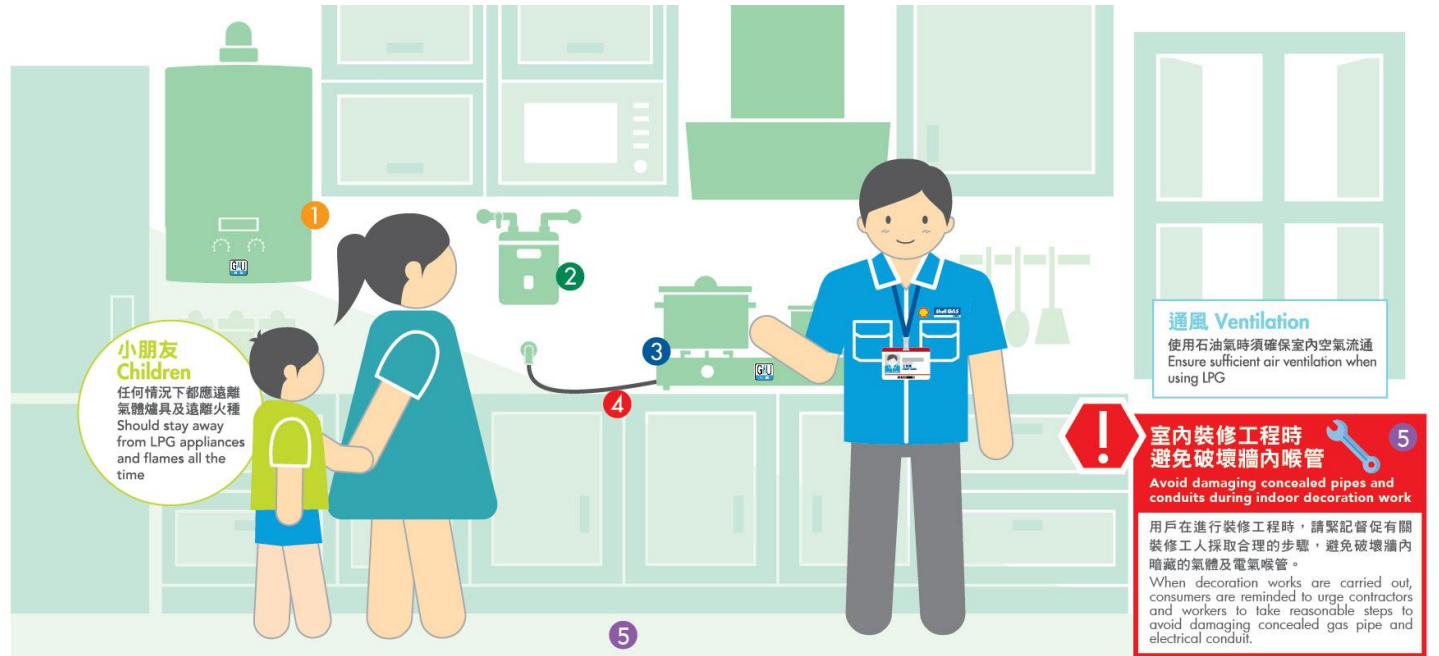
石油氣是一種安全可靠的氣體燃料，本身是無毒、無色、無味的。石油氣內加入了一種特殊氣味，如遇有洩漏，容易讓人察覺。此外，石油氣較空氣為重，一旦洩漏會沉積在地面上。

LPG is a safe and reliable fuel, it is nontoxic, colourless and odourless. For safety reasons, a special odour is added to help detection of any leaks. It is heavier than air, it tends to accumulate on ground level upon gas leakage.



石油氣安全注意事項 Precautions on LPG Safety

- 所有氣體用具的安裝、定期檢查、維修及拆除，必須由註冊氣體工程承辦商僱用的註冊氣體裝置技工進行。
Installation, maintenance, repair and dismantlement of gas appliances and parts must be carried out by registered gas installer employed by registered gas contractor.
- 使用氣體爐具時必須有人看管。
Must be under supervision when LPG appliances are in use.
- 外出時要確保關上所有氣體爐具。
Turn off all LPG appliances when away.
- 石油氣燃燒時，火焰應是穩定及藍色的。如發現任何異常情況，請聯絡親殼石油氣客戶服務熱線(2435 8388)作安全檢查。
LPG should burn with a steady blue flame. If not, please contact Shell Gas Customer Service Hotline (2435 8388) for safety inspection.
- 切勿使用非原廠配件，如節能環。
Do not apply any spare parts not supplied from original manufacturer.
- 不應儲存總容量超過130升(重量約50公斤)的石油氣(包括空瓶)。
Do not store LPG cylinders (including empty cylinders) with a total nominal water capacity of over 130 litres (approximately 50 kg).



小朋友 Children

任何情況下都應遠離氣體爐具及遠離火種
Should stay away from LPG appliances and flames all the time

通風 Ventilation

使用石油氣時須確保室內空氣流通
Ensure sufficient air ventilation when using LPG

室內裝修工程時 避免破壞牆內喉管

Avoid damaging concealed pipes and conduits during indoor decoration work

用戶在進行裝修工程時，請緊記督促有關裝修工人採取合理的步驟，避免破壞牆內暗藏的氣體及電氣喉管。

When decoration works are carried out, consumers are reminded to urge contractors and workers to take reasonable steps to avoid damaging concealed gas pipe and electrical conduit.

熱水爐 Gas Water Heater



- 選擇備有熄火裝置及有<GU>標誌的熱水爐具。
Purchase gas water heater with flame failure devices and <GU> mark.
- 本港合法的住宅式氣體爐具，均有「GU」標誌。
Legally sold gas appliances must have <GU> mark.
- 應使用合規格的密封式熱水爐。
Should install room-sealed gas water heaters.

禁止安裝無煙道式氣體熱水爐

Flueless Gas Water Heater is Forbidden to Install

根據氣體安全規例，任何人不得裝置無煙道式氣體熱水爐，祇有那些在2000年4月1日前安裝以供廚房洗滌用途的無煙道式(洗滌盆)氣體熱水爐才可繼續使用，但使用時需要確保室內有足夠通風，及供應熱水時間不應超過5分鐘。

According to the Gas Safety Regulations, no person shall install a flueless gas water heater. Only those flueless gas water heaters (sink heaters) already installed before 1 April 2000 for supplying kitchen sinks for washing purpose are permitted to be used with provision of adequate ventilation during use and the duration of usage should not exceed five minutes.

石油氣錶及石油氣總掣 LPG Meter & Main valve

- 建議將石油氣錶及總掣置於通風位置，以便石油氣洩漏時氣體容易散發出外。
Suggest installing the LPG meter and valve at well-ventilated location, easy for dispersal in case of gas leakage.
- 如遇上石油氣供應突然中斷，應立即關上石油氣總掣，直至聲運商另行通知。
Shut off the LPG main valve if LPG supply is found interrupted. Don't open the main valve until further notice from our operator.
- 請於長時間外出時關上石油氣總掣。
Shut off the main valve while not using for a prolonged period.

煮食爐具 LPG Appliances

- 須置於遠離窗戶及易燃物品的地方。
Be located far away from window and flammable objects.
- 選擇備有熄火裝置及有<GU>標誌的氣體煮食爐具
Purchase gas cooking appliances with flame failure devices and <GU> mark.
- 本港合法的住宅式爐具，均有「GU」標誌。
Legally sold gas appliances must have <GU> mark.
- 避免食物煮滾溢岫，淋熄爐火。
Avoid spills which might extinguish the fire.

膠喉 Rubber Hose

- 按到期日或3年更換一次。
Replace as indicated or replace every 3 years.
- 經常清理，避免油煙積聚影響喉管壽命。
Clean and check frequently to maintain durability.

