

安全檢查 Regular Safety Inspection

牽機電工程署呼籲：氣體裝置須每18個月作定期安全檢查。

為確保家居安全，蜆殼石油氣的客戶均可享有18個月一次的免費定期安全檢查服務。蜆殼石油氣分銷商均為註冊氣體工程承辦商，聘有合資格氣體技工為客戶提供專業檢查及服務。如欲安排檢查或有任何查詢，請即致電以下蜆殼石油氣分銷商預約。

EMSD Warning: Householders should arrange regular safety inspection of gas installation in every 18 months.

To ensure that all LPG appliances are checked and maintained periodically, Shell Gas provides safety checking service to all customers every 18 months. Please contact the following distributor for appointment or any inquiries.

蜆殼石油氣常用電話 Shell Gas Useful Hotlines

客戶服務熱線

Customer Service Hotline:

2435 8388

24小時緊急熱線

24-hr Emergency Hotline:

2322 2000



網址 Website:

www.dsg-energy.com

如有任何疑問，請與下列蜆殼石油氣分銷商聯絡：
For any inquiries, please contact the following Shell Gas Distributor:



C-SL-Feb21

處理石油氣洩漏 Emergency Procedures of Gas Leaks

1 熄滅所有火種 To put out all naked flames

▶ 熄滅一切火種。
Extinguish all naked flames.



▶ 切勿開關任何電掣。
Do not touch any electrical switch.



2 將石油氣散發出屋外 To disperse the gas

▶ 關掉所有氣體爐具及調節器。
Switch off all gas appliances and regulator.



▶ 打開所有窗戶讓石油氣散發出外。
Fully open windows and doors.



3 如情況不受控制 If the gas leakage is serious



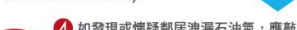
1 立即遠離現場。
Leave the scene.



2 到事發場外致電蜆殼石油氣24小時緊急熱線 **2322 2000** 或 **999** 報警。
Immediately call our 24-hour Emergency Hotline **2322 2000** or **999** outside the scene.



3 請清楚說明您的姓名、地址及現場情況。
State your name, address and current situation clearly.



4 如發現或懷疑鄰居洩漏石油氣，應敲門通知鄰居。切勿按門鈴或任何電掣！
If LPG is detected or suspected to be leaking from an adjacent flat, please inform your neighbor but **DO NOT PRESS** the doorbell or any electrical switch!



更換石油氣瓶 Steps to Exchange LPG Cylinder

1 確保附近沒有火種及不可吸煙。
Ensure NO flames nearby and do not smoke.



2 關掉所有氣體爐具。
Switch off all gas appliances.



3 「調節器拆除」三步曲
3 Steps for Regulator Disconnection



4 「調節器接駁」三步曲
3 Steps for Regulator Installation



5 檢查氣體爐具是否操作正常。
Check the gas appliances for proper operation.*



*如發現任何異常情況，請聯絡所屬蜆殼石油氣分銷商檢查。
Please contact Shell Gas Distributor for safety inspection if there is any abnormal status.



瓶裝蜆殼石油氣 安全資訊小冊子 Shell Gas Safety Leaflet (Cylinder)



蜆燃安心
燃點家的溫度



Shell GAS
Licensee

石油氣的特性 The Properties of Liquefied Petroleum Gas (LPG)

石油氣是一種安全可靠的氣體燃料，本身是無毒、無色、無味的。石油氣內加入了一種特殊氣味，如遇有洩漏，容易讓人察覺。此外，石油氣較空氣為重，一旦洩漏會沉積在地面上。

LPG is a safe and reliable fuel, it is non-toxic, colourless and odourless. For safety reasons, a special odour is added to help detection of any leaks. It is heavier than air, it tends to accumulate on ground level upon gas leakage.



石油氣安全注意事項 Precautions on LPG Safety

- 所有氣體用具的安裝、定期檢查、維修及拆除，必須由註冊氣體工程承辦商僱用的註冊氣體裝置技工進行。
Installation, maintenance, repair and dismantlement of gas appliances and parts must be carried out by registered gas installer employed by registered gas contractor.
- 使用氣體爐具時必須有人看管。
Must be under supervision when LPG appliances are in use.
- 外出時要確保關上所有氣體爐具。
Turn off all LPG appliances when away.
- 石油氣燃燒時，火焰應是穩定及藍色的。如發現任何異常情況，請聯絡所屬規殼石油氣分銷商檢查。
LPG should burn with a steady blue flame. If not, please contact Shell Gas Distributor for safety inspection.
- 切勿使用非原廠配件，如節能環。
Do not apply any spare parts not supplied from original manufacturer.
- 不應儲存總容量超過130升（重量約50公斤）的石油氣（包括空瓶）。
Do not store LPG cylinders (including empty cylinders) with a total nominal water capacity of over 130 litres (approximately 50 kg).



熱水爐 Gas Water Heater

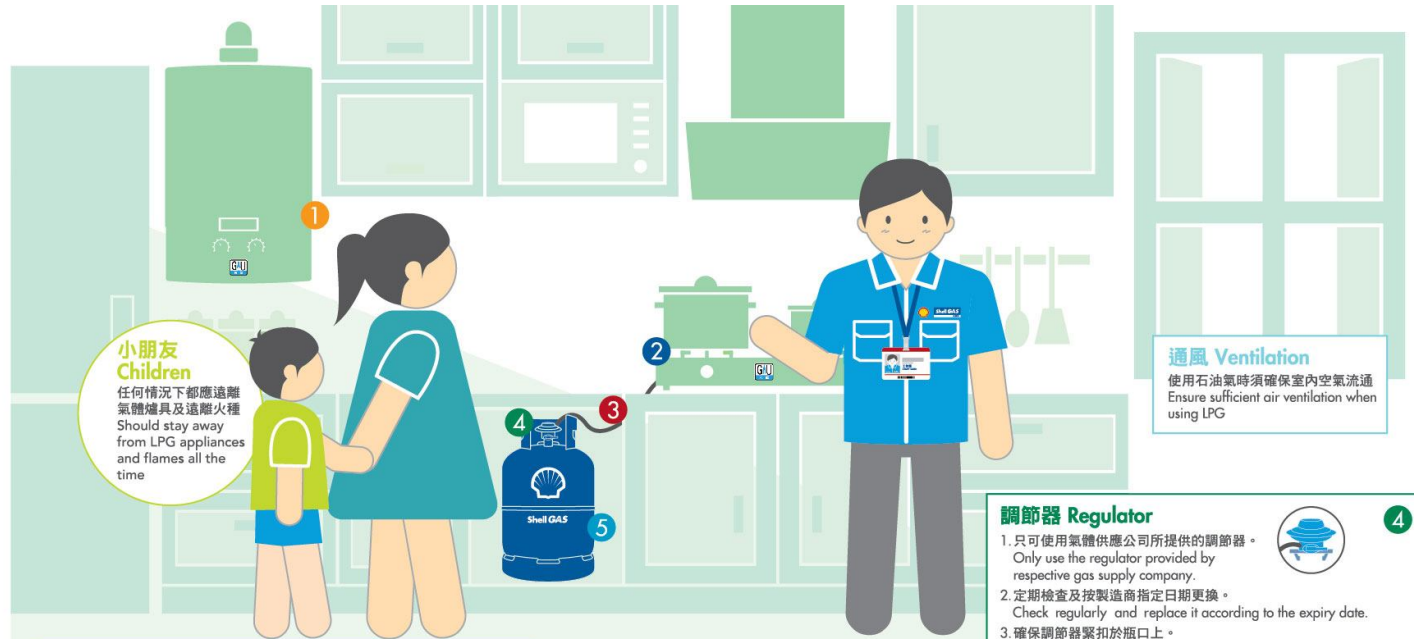
- 選擇備有熄火裝置及有<GU>標誌的熱水爐具。
Purchase gas water heater with flame failure devices and <GU> mark.
- 本港合法的住宅式氣體爐具，均有「GU」標誌。
Legally sold gas appliances must have <GU> mark.
- 應使用合規格的密封式熱水爐。
Should install room-sealed gas water heaters.

禁止安裝無煙道式氣體熱水爐 Flueless Gas Water Heater is Forbidden to Install

根據氣體安全規例，任何人不得裝置無煙道式氣體熱水爐，祇有那些在2000年4月1日前安裝以供廚房洗滌用途的無煙道式（洗滌盆）氣體熱水爐才可繼續使用，但使用時需要確保室內有足夠通風，及供應熱水時間不應超過6分鐘。
According to the Gas Safety Regulations, no person shall install a flueless gas water heater. Only those flueless gas water heaters (sink heaters) already installed before 1 April 2000 for supplying kitchen sinks for washing purpose are permitted to be used with provision of adequate ventilation during use and the duration of usage should not exceed five minutes.

小朋友 Children

任何情況下都應遠離氣體爐具及遠離火種
Should stay away from LPG appliances and flames all the time



通風 Ventilation

使用石油氣時須確保室內空氣流通
Ensure sufficient air ventilation when using LPG

調節器 Regulator

- 只可使用氣體供應公司所提供的調節器。
Only use the regulator provided by respective gas supply company.
- 定期檢查及按製造商指定日期更換。
Check regularly and replace it according to the expiry date.
- 確保調節器緊扣於瓶口上。
Ensure the regulator is securely connected to the cylinder valve.
- 勿於爐具燃燒時裝拆。
Never disconnect when the burner remains alight.
- 請於長時間外出時關上調節器。
Shut off the regulator while not using for a prolonged period.

煮食爐具 LPG Appliances

- 須置於遠離窗戶及易燃物品的地方。
Be located far away from window and flammable objects.
- 選擇備有熄火裝置及有<GU>標誌的氣體煮食爐具
Purchase gas cooking appliances with flame failure devices and <GU> mark.
- 本港合法的住宅式爐具，均有「GU」標誌。
Legally sold gas appliances must have <GU> mark.
- 避免食物滾溢，淋熄爐火。
Avoid spills which might extinguish the fire.

膠喉 Rubber Hose

- 按到期日或3年更換一次。
Replace as indicated or replace every 3 years.
- 經常清理，避免油煙積聚影響喉管壽命。
Clean and check frequently to maintain durability.

石油氣瓶 LPG Cylinder

- 應向合資格石油氣分銷商購買。
Purchase from approved LPG distributors.
- 未使用的瓶裝規殼石油氣，均設有瓶口封條，以保證原裝。
Un-used Shell Gas cylinders must have warranty seals in place.
- 應儲存於空氣流通的地方。
Place in well-ventilated area.
- 必須保持直立。
Store upright.
- 應放置於遠離熱源及火源的地方。
Keep away from heat and flames.

封條 Seal