

安全檢查 Regular Safety Inspection

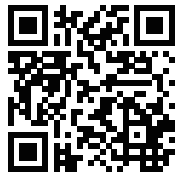
為確保家居安全，蜆殼石油氣的客戶均可享有18個月一次的免費定期安全檢查服務。蜆殼石油氣分銷商均為註冊氣體工程承辦商，聘有合資格氣體技工為客戶提供專業檢查及服務。如欲安排檢查或有任何查詢，請即致電以下蜆殼石油氣分銷商預約。

To ensure that all LPG appliances are checked and maintained periodically, Shell Gas provides safety checking service to all customers every 18 months. Please contact the following distributor for appointment or any inquiries.

蜆殼石油氣常用電話 Shell Gas Useful Hotlines

24小時緊急熱線
24-hr Emergency Hotline:

2892 3456



網址 Website :
www.dsg-energy.com

如有任何疑問，請與下列蜆殼石油氣分銷商聯絡：
For any inquiries, please contact the following Shell Gas Distributor:

處理石油氣洩漏 Emergency Procedures of Gas Leaks

1 熄滅所有火種 To put out all naked flames

- ▶ 熄滅一切火種。
Extinguish all naked flames.
- ▶ 切勿開關任何電掣。
Do not touch any electrical switch.



2 將石油氣散發出屋外 To disperse the gas

- ▶ 關掉所有氣體爐具及調節器。
Switch off all gas appliances and regulator.
- ▶ 打開所有窗戶讓石油氣散發出外。
Fully open windows and doors.



3 如情況不受控制 If the gas leakage is serious

- 1 立即遠離現場。
Leave the scene.
- 2 到事發場外致電蜆殼石油氣24小時緊急熱線 **2892 3456** 或 **999** 報警。
Immediately call our 24-hour Emergency Hotline **2892 3456** or **999** outside the scene.
- 3 請清楚說明您的姓名、地址及現場情況。
State your name, address and current situation clearly.
- 4 如發現或懷疑鄰居洩漏石油氣，應敲門通知鄰居。切勿按門鈴或任何電掣！
If LPG is detected or suspected to be leaking from an adjacent flat, please inform your neighbor but **DO NOT PRESS** the doorbell or any electrical switch!

更換石油氣瓶 Steps to Exchange LPG Cylinder

- 1 確保附近沒有火種及不可吸煙。
Ensure NO flames nearby and do not smoke.
- 2 關掉所有氣體爐具。
Switch off all gas appliances.



3 「調節器拆除」三步曲 3 Steps for Regulator Disconnection

- A. 關掉調節器 (成水平方向)
Switch off the regulator (horizontal)
- B. 反時針方向轉
Turn the regulator anti-clockwise
- C. 向上拆除
Remove it upward

4 「調節器接駁」三步曲 3 Steps for Regulator Installation

- A. 關掉調節器 (成水平方向)
Switch off the regulator (horizontal)
- B. 向下按
Press the regulator down onto the cylinder valve
- C. 順時針方向轉
Turn clockwise

5 檢查氣體爐具是否操作正常。* Check the gas appliances for proper operation.*

- A. 開啟調節器 (成垂直方向)
Switch on the regulator (vertical)
- B. 開啟氣體爐具
Switch on the gas appliances

*如發現任何異常情況，請聯絡所屬蜆殼石油氣分銷商檢查。
Please contact Shell Gas Distributor for safety inspection if there is any abnormal status.



瓶裝蜆殼石油氣 安全資訊小冊子 Shell Gas Safety Leaflet (Cylinder)



蜆 燃 安 心
燃 點 家 的 溫 度



Shell GAS
Licensee

石油氣的特性 The Properties of Liquefied Petroleum Gas (LPG)

石油氣是一種安全可靠的氣體燃料，本身是無毒、無色、無味的。石油氣內加入了一種特殊氣味，如遇有洩漏，容易讓人察覺。此外，石油氣較空氣為重，一旦洩漏會沉積在地面上。

LPG is a safe and reliable gaseous fuel, it is non-toxic, colourless and odourless. For safety reasons, a special odour is added to help detection of any leaks. It is heavier than air, it tends to accumulate on ground level upon gas leakage.



無毒
Non-toxic



無色
Colourless



無味
Odourless



易燃
Flammable



具爆炸性
Explosive



石油氣安全注意事項 Precautions on LPG Safety

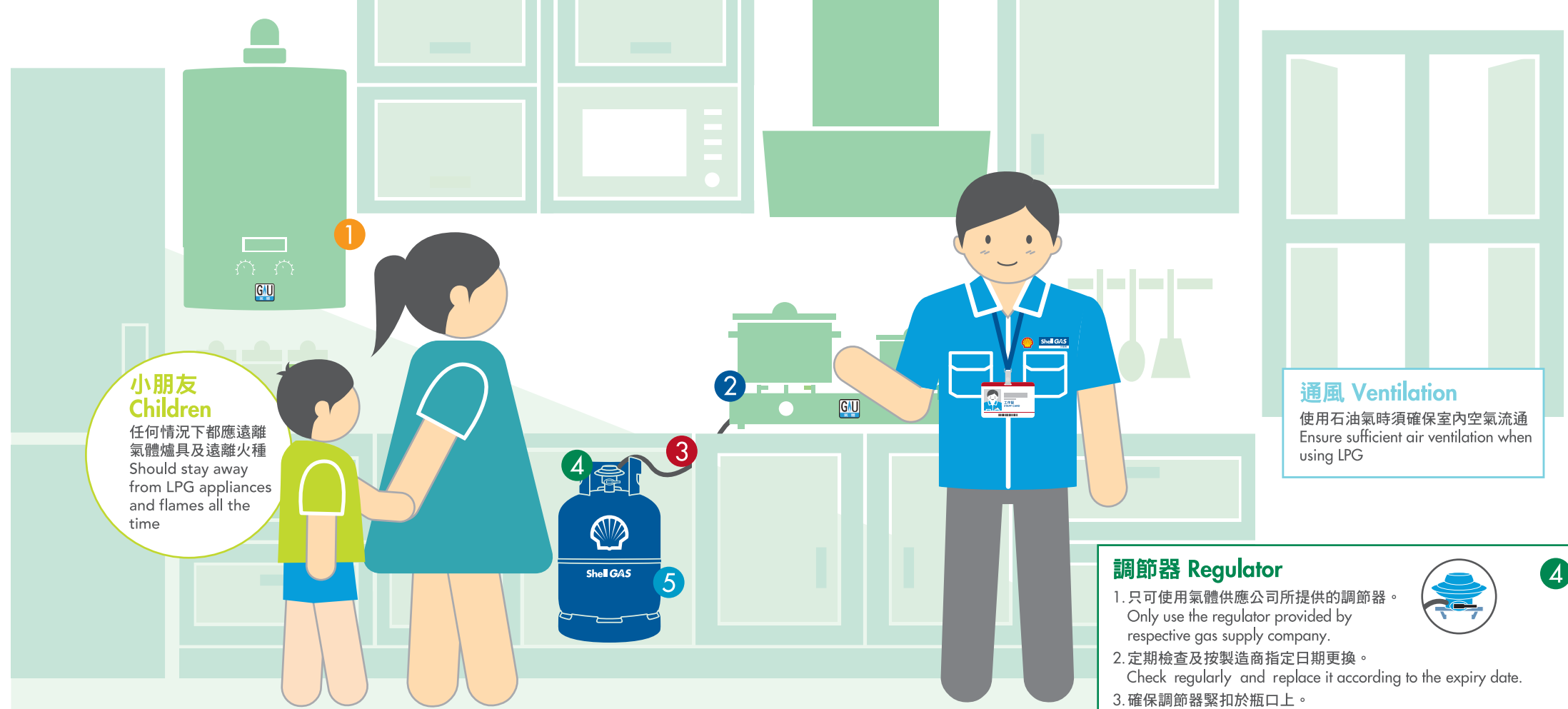
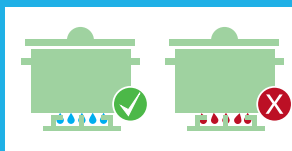
- 1 所有氣體用具的安裝、定期檢查、維修及拆除，必須聘用於土地工務運輸局所註冊之氣體工程承辦商進行。
Installation, maintenance, repair and dismantlement of gas appliances and parts must be carried out by the Gas Contractor registered at DSSOPT.

- 2 使用氣體爐具時必須有人看管。
Must be under supervision when LPG appliances are in use.

- 3 外出時要確保關上所有氣體爐具。
Turn off all LPG appliances when away.

- 4 石油氣燃燒時，火焰應是穩定及藍色的。如發現任何異常情況，請聯絡所屬蜆殼石油氣分銷商檢查。

LPG should burn with a steady blue flame.
If not, please contact Shell Gas Distributor for safety inspection.



小朋友 Children

任何情況下都應遠離氣體爐具及遠離火種
Should stay away from LPG appliances and flames all the time

通風 Ventilation

使用石油氣時須確保室內空氣流通
Ensure sufficient air ventilation when using LPG

調節器 Regulator

1. 只可使用氣體供應公司所提供的調節器。
Only use the regulator provided by respective gas supply company.
2. 定期檢查及按製造商指定日期更換。
Check regularly and replace it according to the expiry date.
3. 確保調節器緊扣於瓶口上。
Ensure the regulator is securely connected to the cylinder valve.
4. 勿於爐具燃燒時裝拆。
Never disconnect when the burner remains alight.
5. 請於長時間外出時關上調節器。
Shut off the regulator while not using for a prolonged period.



4

熱水爐 Water Heater

1. 建議選擇備有熄火安全裝置的熱水爐具，例如有 <GU> 標誌之熱水爐具。
Suggest to purchase water heater with flame failure devices, for example with <GU> mark.
2. 建議使用合規格的密封式熱水爐。
Suggest to install room-sealed gas water heaters.



1

禁止進口無煙道式氣體熱水爐 Flueless Gas Water Heater is Forbidden to import

根據2010年12月13日第361/2010號澳門行政長官批示，禁止進口無煙道式氣體熱水爐。因此為保障客戶安全，建議使用密封式（例如對衝式）熱水爐，不用擔心燃燒後之廢氣（包括有毒的一氧化碳）留在室內。
According to the Macau Chief Executive's Dispatch No. 361/2010, flueless gas water heater is forbidden from import. For the sake of customer safety, room-sealed water heater (e.g. balance flue) is preferred because the combusted products (incl. poisonous carbon monoxide) are discharged outside.



煮食爐具 LPG Appliances

1. 須置於遠離窗戶及易燃物品的地方。
Be located far away from window and flammable objects.
2. 建議選擇備有熄火裝置，例如有 <GU> 標誌的氣體爐具。
Purchase appliances with flame failure devices, for example with <GU> mark.
3. 避免食物煮滾溢出，淋熄爐火。
Avoid spills which might extinguish the fire.



2

膠喉 Rubber Hose

1. 按到期日或3年更換一次。
Replace as indicated or replace every 3 years.
2. 經常清理，避免油煙積聚影響喉管壽命。
Clean and check frequently to maintain durability.



3

石油氣瓶 LPG Cylinder

1. 應向合資格石油氣分銷商購買。
Purchase from approved LPG distributors.
2. 未使用的瓶裝蜆殼石油氣，均設有瓶口封條，以保證原裝。
Un-used Shell Gas cylinders must have warranty seals in place.
3. 應儲存於空氣流通的地方。
Place in well-ventilated area.
4. 必須保持直立。
Store upright.
5. 應放置於遠離熱源及火源的地方。
Keep away from heat and flames.



封條 Seal

5